



Main Feature

1. From 1 to 3 Poles version are available with high switching current up to 30A.
2. Solder Lug Terminal with Flanged Case are available for customer's various application.

Contact Rating

Load Type	RPT (No Common)	RPT-2P	RPT- 3P	RP-2P	RP-3P
Rated Load (Resistive)	30A/28VDC	20A/15VDC	20A/15VDC	10A 240VAC	10A 240VAC
	30A/120VAC	13A/28VDC	13A/28VDC	13A 120VAC	13A 120VAC
	30A/240VAC	25A/120VAC	25A/120VAC	13A 28VDC	13A 28VDC
	10A/600VAC	25A/240VAC	25A/240VAC	-	-
	-	5A/600VAC	5A/600VAC	-	-
Contact Capacity	1Hp/120VAC	3/4Hp/120VAC	1/2/Hp/120VAC	1/2HP 240VAC	1/2HP 240VAC
	1 1/2Hp/240VAC	1Hp/240VAC	1/2Hp/208/240VAC	1/3HP 120VAC	1/3HP 120VAC
Rated Carrying Current	30A	25A	25A	10A	10A
Max. Allowable Voltage	AC 600V	AC 300V	AC 300V	AC 300V	AC 300V
	DC 48V	DC 48V	DC 48V	DC 48V	DC 48V
Max. Allowable Current	30A	25A	25A	13A	13A
Max. Allowable Power Force	7,200VA	6,000VA	6,000VA	2,400VA	2,400VA
	840W	360W	360W	360W	360W
Contact Material	Ag Alloy	Ag Alloy	Ag Alloy	Ag Alloy	Ag Alloy
Contact Form	SPST, SPDT	DPST, DPDT	3PST, 3PDT	DPST,DPDT	3PST,3PDT

Application

Vending Machine, Cooking Appliances, Office Machine, Domestic Appliances, Control Equipment, etc

Performance (at Initial Value)

- Contact Resistance 100 mΩ Max. @1A,6VDC
- Operate Time..... 15 mSec. Max.
- Release Time 10 mSec. Max.
- Dielectric Strength :
Between Coil & Contact 1,500VAC at 50/60 Hz for one minute.
Between Contacts 1,000VAC at 50/60 Hz for one minute.
- Surge Strength 1,500V (between Coil & Contact 1.2x50μSec.)
- Insulation Resistance 100 MegaΩ Min. at 500VDC.
- Max. On/Off Switching :
Electrical..... 6 Cycles per Minute.
Mechanical 300 Cycles per Minute.
- Temperature Range..... -45~70°C

- Humidity Range 45~85% RH.
- Coil Temperature Rise 50°C Max.
- Vibration :
Endurance 10 to 55 Hz dual amplitude width 1.5mm.
Error Operation..... 10 to 55 Hz dual amplitude width 1.5mm.
- Shock :
Endurance 1,000 m/S².
Error Operation..... 100 m/S².
- Life Expectancy :
Mechanical 10⁷ Operations at No Load condition.
Electrical..... 10⁵ Operations at Rated Resistive Load.
- Weight About 85 g.

Safety Standard & Its File Number

- RPT
- UL & C-UL E175730
- RP
- NIL

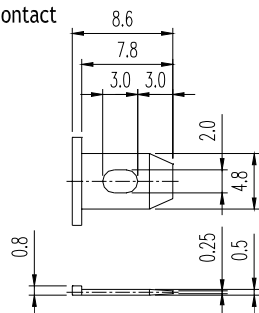
Classification

Model	RP(T)		
Coil Type	AC Coil		
Contact Form	1 Pole	2 Poles	3 Poles(RP)
Number of Poles	1A / 1B	2C / 2A / 2B	3C / 3A / 3B
Terminal Type	RP(T)-N <input type="checkbox"/> <input type="checkbox"/> AS/AMS/ABS RP(T)-N <input type="checkbox"/> <input type="checkbox"/> AW/AMW/ABW	RP(T)-2 <input type="checkbox"/> <input type="checkbox"/> AS/AMS/ABS RP(T)-2 <input type="checkbox"/> <input type="checkbox"/> AW/AMW/ABW	RP(T)-3 <input type="checkbox"/> <input type="checkbox"/> AS/AMS/ABS RP(T)-3 <input type="checkbox"/> <input type="checkbox"/> AW/AMW/ABW
Case Type	RP(T)-N/2/3 <input type="checkbox"/> <input type="checkbox"/> ASH/AMSH/ABSH RP(T)-N/2/3 <input type="checkbox"/> <input type="checkbox"/> ASF/AMSF/ABSF	RP(T)-N/2/3 <input type="checkbox"/> <input type="checkbox"/> AWH/AMWH/ABWH RP(T)-N/2/3 <input type="checkbox"/> <input type="checkbox"/> AWF/AMWF/ABWF	
LED	RP(T)-N/2/3 <input type="checkbox"/> <input type="checkbox"/> ASFL/AMSFL/ABSFL RP(T)-N/2/3 <input type="checkbox"/> <input type="checkbox"/> AWFL/AMWFL/ABWFL		
Touch Button	RP(T)-N/2/3 <input type="checkbox"/> <input type="checkbox"/> ASLT/AMSLT/ABSLT RP(T)-N/2/3 <input type="checkbox"/> <input type="checkbox"/> ASFLT/AMSFLT/ABSFLT RP(T)-N/2/3 <input type="checkbox"/> <input type="checkbox"/> AWFLT/AMWFLT/ABWFLT		
Diode	RP(T)-N/2/3 <input type="checkbox"/> <input type="checkbox"/> ASFLTD/AMSFLTD/ABSFLTD RP(T)-N/2/3 <input type="checkbox"/> <input type="checkbox"/> AWFLTD/AMWFLTD/ABWFLTD		

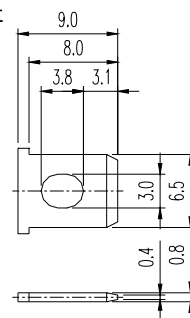
Model	RP(T)		
Coil Type	DC Coil		
Contact Form	1 Pole	2 Poles	3 Poles
Number of Poles	1A / 1B	2C / 2A / 2B	3C / 3A / 3B
Terminal Type	RP(T)-N <input type="checkbox"/> <input type="checkbox"/> DS/DMS/DBS RP(T)-N <input type="checkbox"/> <input type="checkbox"/> DW/DMW/DBW	RP(T)-2 <input type="checkbox"/> <input type="checkbox"/> DS/DMS/DBS RP(T)-2 <input type="checkbox"/> <input type="checkbox"/> DW/DMW/DBW	RP-3 <input type="checkbox"/> <input type="checkbox"/> DS/DMS/DBS RP-3 <input type="checkbox"/> <input type="checkbox"/> DW/DMW/DBW
Case Type	RP(T)-N/2/3 <input type="checkbox"/> <input type="checkbox"/> DSH/DMSH/DBSH RP(T)-N/2/3 <input type="checkbox"/> <input type="checkbox"/> DSF/DMSF/DBSF	RP(T)-N/2/3 <input type="checkbox"/> <input type="checkbox"/> WH/DMWH/DBWH RP(T)-N/2/3 <input type="checkbox"/> <input type="checkbox"/> DWF/DMWF/DBWF	
LED	RP(T)-N/2/3 <input type="checkbox"/> <input type="checkbox"/> DSFL/DMSFL/DBSFL RP(T)-N/2/3 <input type="checkbox"/> <input type="checkbox"/> DWFL/DMWFL/DBWFL		
Touch Button	RP(T)-N/2/3 <input type="checkbox"/> <input type="checkbox"/> DSLTD/DMSLTD/DBSLTD RP(T)-N/2/3 <input type="checkbox"/> <input type="checkbox"/> DSFLT/DMSFLT/DBSFLT RP(T)-N/2/3 <input type="checkbox"/> <input type="checkbox"/> DWFLT/DMWFLT/DBWFLT		
Diode	RP(T)-N/2/3 <input type="checkbox"/> <input type="checkbox"/> DSFLTD/DMSFLTD/DBSFLTD RP(T)-N/2/3 <input type="checkbox"/> <input type="checkbox"/> DWFLTD/DMWFLTD/DBWFLTD		

Terminal Dimensions ($\leq 5\text{mm} \pm 0.2\text{mm}$, $> 5\text{mm} \pm 0.3\text{mm}$, the tolerance of PCB thru hole: $+0.1\text{mm}$)

.189" (4.8mm)
Quick Contact

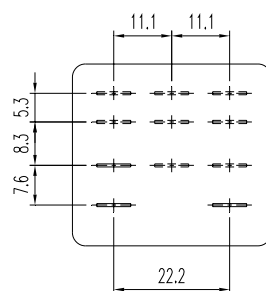
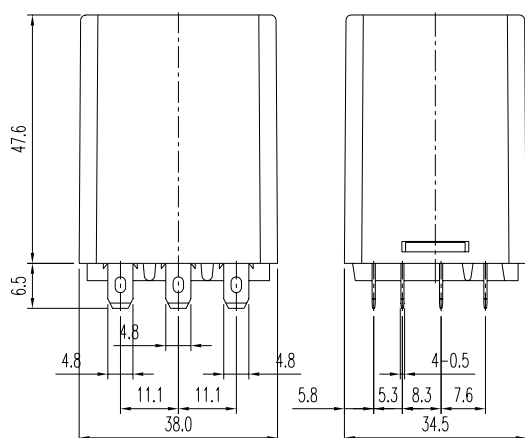


.256" (6.5mm)
Quick Contact

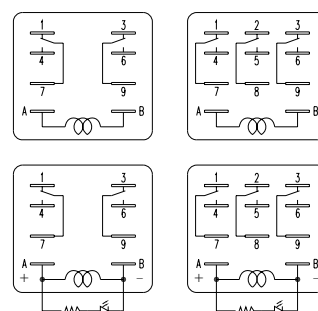


Dimension ($\leq 5\text{mm} \pm 0.2\text{mm}$, $> 5\text{mm} \pm 0.3\text{mm}$, the tolerance of PCB thru hole: $+0.1\text{mm}$)

RP

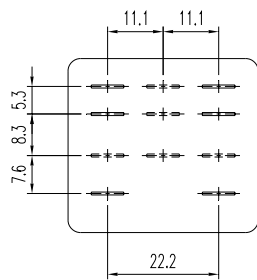
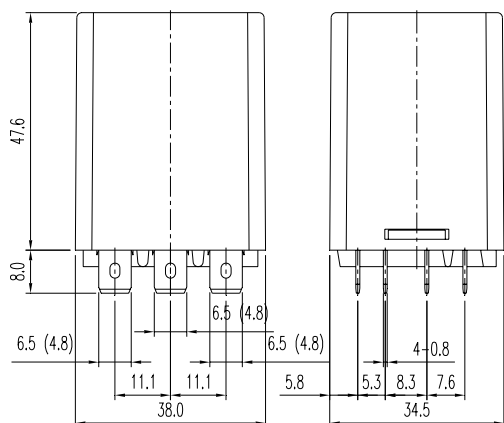


BOTTOM VIEW

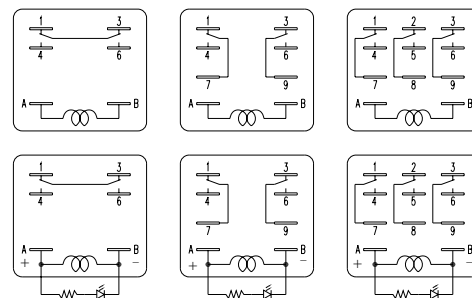


BOTTOM VIEW

RPT



BOTTOM VIEW



BOTTOM VIEW